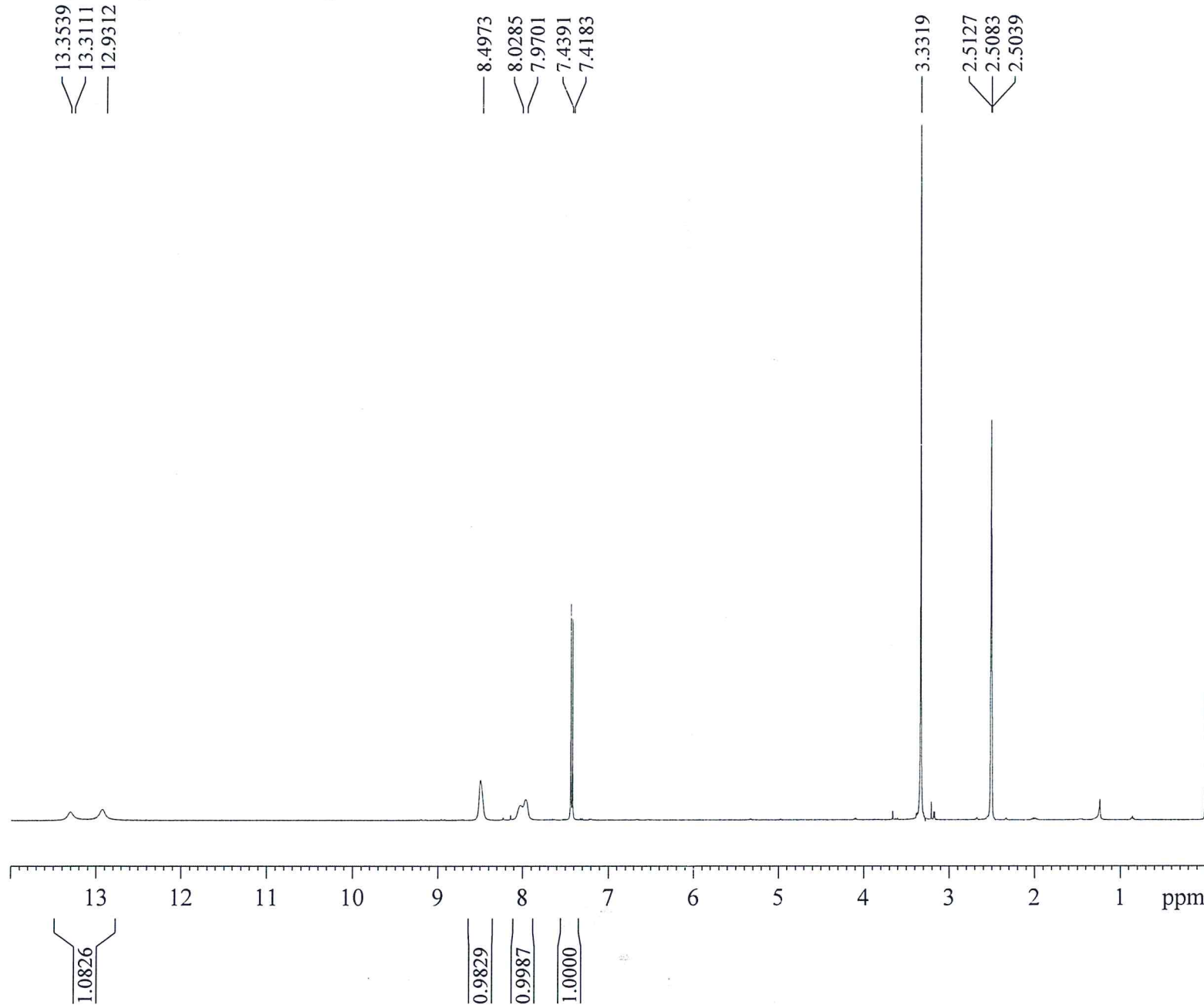


Group 6-Synthesis Group



# PharmaBlock

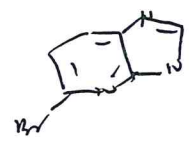
*PB02870*

Current Data Parameters  
NAME PB0001698-074-01  
EXPNO 1  
PROCNO 1

F2 - Acquisition Parameters  
Date\_ 20170509  
Time 18.43  
INSTRUM spect  
PROBHD 5 mm PABBO BB/  
PULPROG zg30  
TD 65536  
SOLVENT DMSO  
NS 16  
DS 2  
SWH 8012.820 Hz  
FIDRES 0.122266 Hz  
AQ 4.0894966 sec  
RG 203  
DW 62.400 usec  
DE 6.50 usec  
TE 298.8 K  
D1 1.00000000 sec  
TD0 1

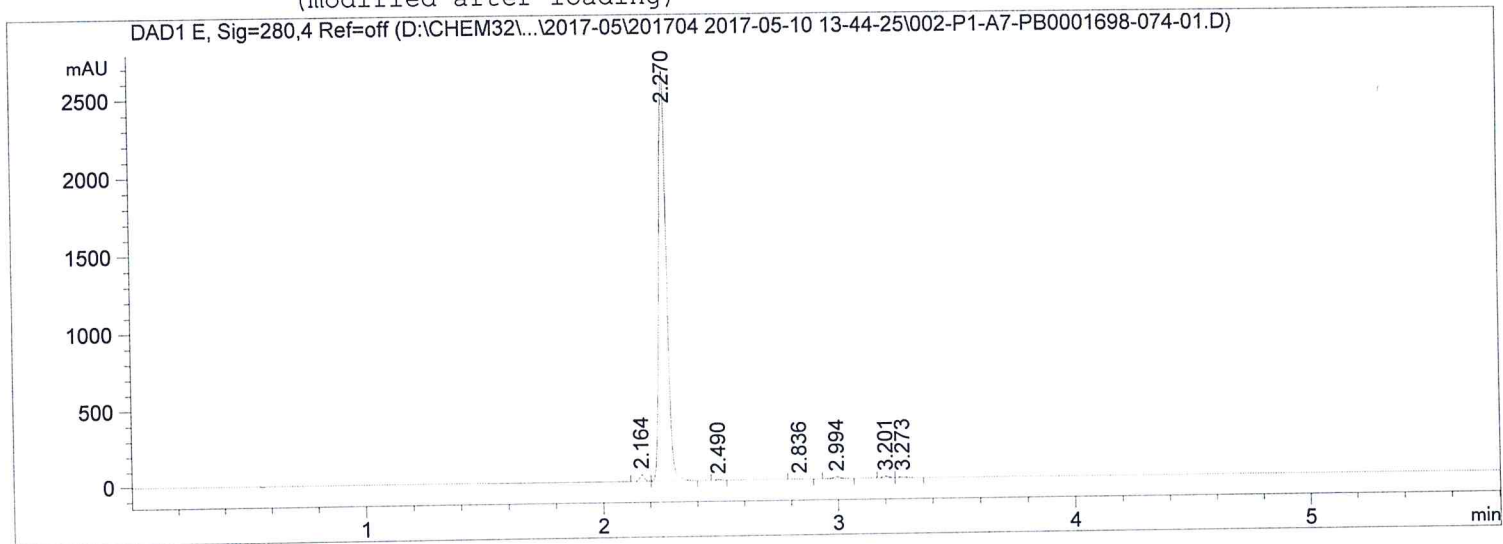
===== CHANNEL f1 =====  
SFO1 400.1324710 MHz  
NUC1 1H  
P1 9.30 usec  
PLW1 36.00000000 W

F2 - Processing parameters  
SI 65536  
SF 400.1300000 MHz  
WDW EM  
SSB 0  
LB 0.30 Hz  
GB 0  
PC 1.00



```

=====
Acq. Operator   : SYSTEM                               Seq. Line :    2
Acq. Instrument : LC-05-01                             Location  :   Pl-A7
Injection Date  : 5/10/2017 1:51:49 PM                 Inj       :    1
                                                    Inj Volume: 1.000 µl
Acq. Method     : D:\Chem32\1\Data\2017-05\201704 2017-05-10 13-44-25\PB-M-5-100.M
Last changed    : 5/10/2017 1:44:25 PM by SYSTEM
Analysis Method : D:\Chem32\1\Data\2017-05\201704 2017-05-10 13-44-25\PB-M-5-100.M (
                    Sequence Method)
Last changed    : 5/10/2017 2:03:54 PM by SYSTEM
                    (modified after loading)
=====
    
```



Area Percent Report

```

Sorted By      :      Signal
Multiplier     :      1.0000
Dilution       :      1.0000
Do not use Multiplier & Dilution Factor with ISTDs
    
```

Signal 1: DAD1 E, Sig=280,4 Ref=off

Peak #	RetTime [min]	Type	Width [min]	Area [mAU*s]	Height [mAU]	Area %
1	2.164	BV	0.0221	67.22908	47.22891	1.0970
2	2.270	VB	0.0352	5987.88477	2665.10938	97.7048
3	2.490	BB	0.0221	8.07109	5.66810	0.1317
4	2.836	BB	0.0399	5.85446	1.98769	0.0955
5	2.994	BB	0.0308	25.45185	12.49967	0.4153
6	3.201	BB	0.0271	18.04223	10.46332	0.2944
7	3.273	BB	0.0294	16.01181	8.33320	0.2613

Totals : 6128.54529 2751.29027

\*\*\* End of Report \*\*\*

PB0001698-074-01\_10094808 51 (0.879)

1: Scan ES+  
9.27e7

