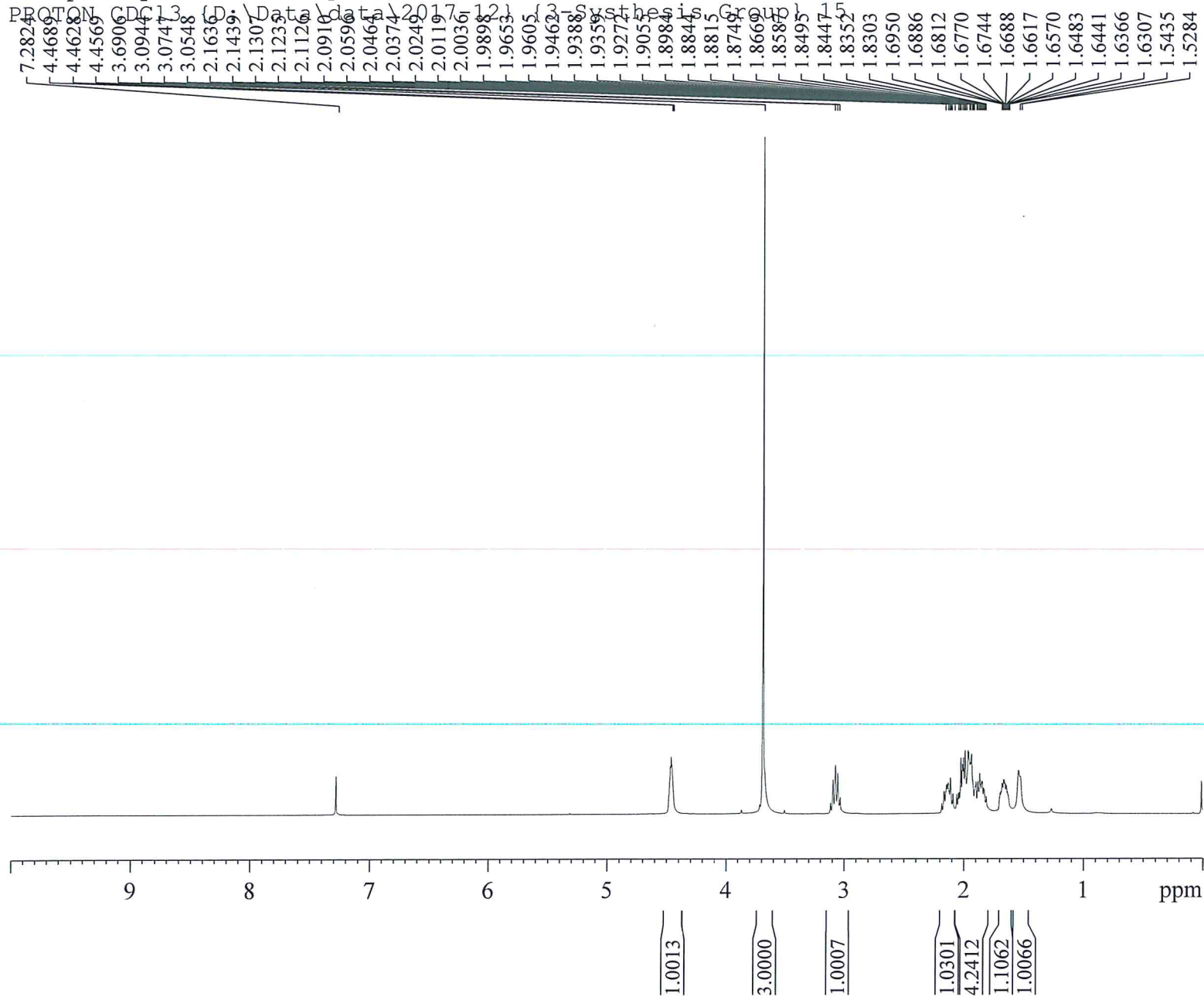


Group 3-Synthesis Group NMR-03



PharmaBlock

Current Data Parameters
NAME PB0001779-067-01
EXPNO 1
PROCNO 1

F2 - Acquisition Parameters
Date_ 20171208
Time 13.02 h
INSTRUM spect
PROBHD Z116098_0658 ()
PULPROG zg30
TD 65536
SOLVENT CDCl3
NS 16
DS 2
SWH 8012.820 Hz
FIDRES 0.244532 Hz
AQ 4.0894966 sec
RG 91.23
DW 62.400 usec
DE 6.50 usec
TE 298.8 K
D1 1.00000000 sec
TD0 1
SFO1 400.1324708 MHz
NUC1 1H
P1 10.00 usec
PLW1 17.23500061 W

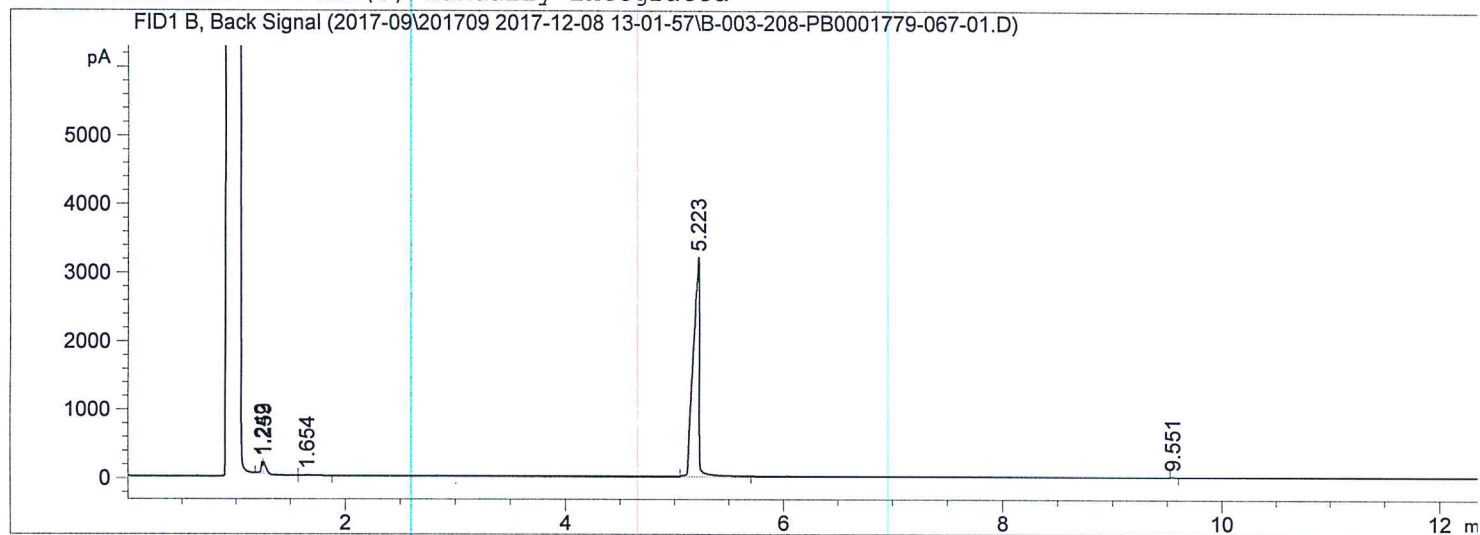
F2 - Processing parameters
SI 65536
SF 400.1300000 MHz
WDW EM
SSB 0
LB 0.30 Hz
GB 0
PC 1.00



PB07868

```

=====
Acq. Operator   : SYSTEM                               Seq. Line :    3
Acq. Instrument : GC-08-01                             Location  : 208 (B)
Injection Date  : 12/8/2017 1:47:25 PM                Inj       :    1
                                                    Inj Volume: 0.5 µl
Different Inj Volume from Sample Entry! Actual Inj Volume : 1 µl
Acq. Method     : D:\Data\2017-09\201709 2017-12-08 13-01-57\HP-5 (General run time 12 mins)
                                                    .M
Last changed    : 12/8/2017 1:01:58 PM by SYSTEM
Analysis Method : D:\Data\2017-09\201709 2017-12-08 13-01-57\HP-5 (General run time 12 mins)
                                                    .M (Sequence Method)
Last changed    : 12/8/2017 5:58:18 PM by SYSTEM
                                                    (modified after loading)
Additional Info  : Peak(s) manually integrated
  
```



=====
 Area Percent Report
 =====

```

Sorted By      : Signal
Multiplier     : 1.0000
Dilution      : 1.0000
Do not use Multiplier & Dilution Factor with ISTDs
  
```

Signal 1: FID1 B, Back Signal

Peak #	RetTime [min]	Type	Width [min]	Area [pA*s]	Height [pA]	Area %
1	1.242	VV	0.0140	152.16666	161.25003	1.19265
2	1.259	VV	0.0155	167.31282	163.30054	1.31137
3	1.654	VB R	0.0552	24.84096	6.07579	0.19470
4	5.223	BV R	0.0492	1.24049e4	3198.66504	97.22712
5	9.551	BB	0.0239	9.46237	6.01127	0.07416

Totals : 1.27587e4 3535.30266

=====
 *** End of Report ***

PB0001779-067-01_07090503 57 (0.984)

1: Scan ES+
4.27e7

