

Current Data Parameters  
NAME PB00774-01 PB0001647-259-01  
EXPNO 1  
PROCNO 1

F2 - Acquisition Parameters  
Date\_ 20170904  
Time 13.33  
INSTRUM spect  
PROBHD 5 mm PABBO BB/  
PULPROG zg30  
TD 65536  
SOLVENT D2O  
NS 16  
DS 2  
SWH 8012.820 Hz  
FIDRES 0.122266 Hz  
AQ 4.0894465 sec  
RG 156.16  
DW 62.400 usec  
DE 6.50 usec  
TE 299.0 K  
D1 1.00000000 sec  
TDO 1

===== CHANNEL f1 =====  
SFO1 400.1324710 MHz  
NUC1 1H  
P1 10.00 usec  
PLW1 16.98200035 W

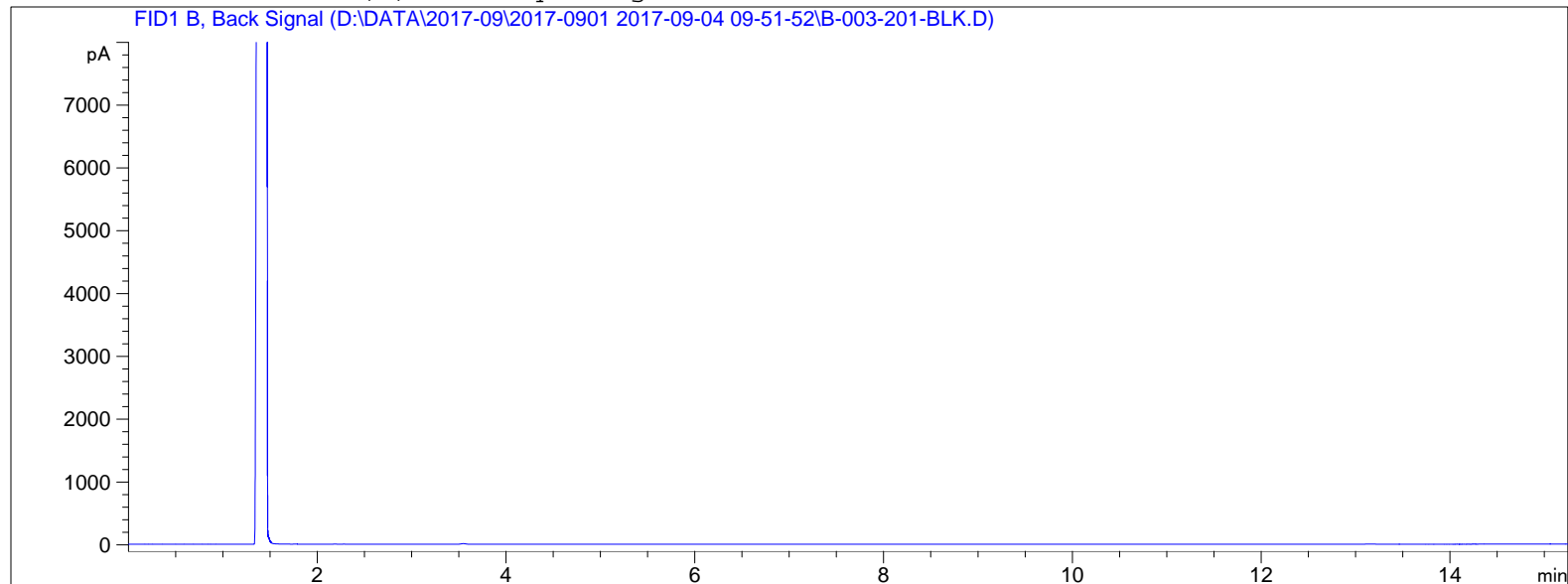
F2 - Processing parameters  
SI 65536  
SF 400.1300000 MHz  
WDW EM  
SSB 0  
LB 0.30 Hz  
GB 0  
PC 1.00

MS Spectrum

MSD1 SPC, time=1.376 of D:\chem\1\DATA\2017-08\201708 2017-08-31 09-00-07\014-P1-A5-PB0001647-259-01.D ES-API, Pos,



```
=====
Acq. Operator   : SYSTEM                               Seq. Line :    3
Acq. Instrument : GC-7820                             Location  :   201 (B)
Injection Date  : 9/4/2017 10:47:40 AM                Inj       :    1
                                                    Inj Volume: 1 µl
Acq. Method     : D:\DATA\2017-09\2017-0901 2017-09-04 09-51-52\General PB50-DB-624.M
Last changed    : 9/4/2017 9:51:52 AM by SYSTEM
Analysis Method : D:\DATA\2017-09\2017-0901 2017-09-04 09-51-52\General PB50-DB-624.M (Sequence
Method)
Last changed    : 9/4/2017 1:09:38 PM by SYSTEM
                  (modified after loading)
Additional Info  : Peak(s) manually integrated
=====
```



```
=====
                          Area Percent Report
=====
```

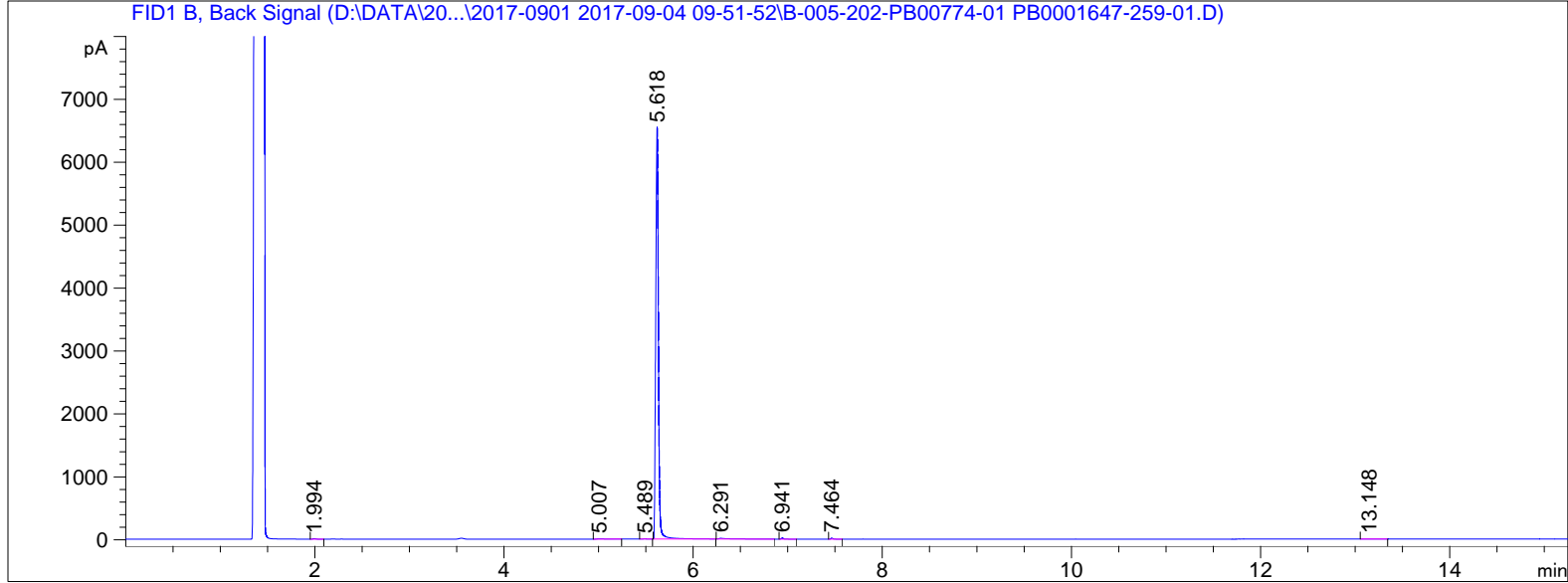
```
Sorted By           :      Signal
Multiplier          :      1.0000
Dilution            :      1.0000
Do not use Multiplier & Dilution Factor with ISTDs
```

No peaks found

```
=====
*** End of Report ***
=====
```

```

=====
Acq. Operator   : SYSTEM                               Seq. Line :    5
Acq. Instrument : GC-7820                               Location  : 202 (B)
Injection Date  : 9/4/2017 11:38:12 AM                Inj       :    1
                                                    Inj Volume: 1 µl
Acq. Method     : D:\DATA\2017-09\2017-0901 2017-09-04 09-51-52\General PB50-DB-624.M
Last changed    : 9/4/2017 9:51:52 AM by SYSTEM
Analysis Method : D:\DATA\2017-09\2017-0901 2017-09-04 09-51-52\General PB50-DB-624.M (Sequence
Method)
Last changed    : 9/4/2017 1:09:38 PM by SYSTEM
                  (modified after loading)
Additional Info  : Peak(s) manually integrated
  
```



=====  
 Area Percent Report  
 =====

```

Sorted By      :      Signal
Multiplier     :      1.0000
Dilution       :      1.0000
Do not use Multiplier & Dilution Factor with ISTDs
  
```

Signal 1: FID1 B, Back Signal

Peak #	RetTime [min]	Type	Width [min]	Area [pA*s]	Height [pA]	Area %
1	1.994	BB	0.0370	17.23160	7.34393	0.13096
2	5.007	BB	0.1029	39.87278	5.16158	0.30304
3	5.489	BB	0.0378	5.79535	2.33346	0.04405
4	5.618	BB	0.0320	1.29526e4	6523.68066	98.44202
5	6.291	BB	0.0951	81.92387	11.06894	0.62264
6	6.941	BB	0.0246	27.49360	17.66426	0.20896
7	7.464	BB	0.0235	27.37485	17.80582	0.20805
8	13.148	BB	0.0726	5.30056	1.10758	0.04029

Totals :                                    1.31576e4  6586.16623

=====  
 \*\*\* End of Report \*\*\*

=====

Acq. Operator	: SYSTEM	Seq. Line	: 7
Acq. Instrument	: LC1260	Location	: Vial 39
Injection Date	: 9/5/2017 9:25:34 PM	Inj	: 1
		Inj Volume	: 10.000 µl

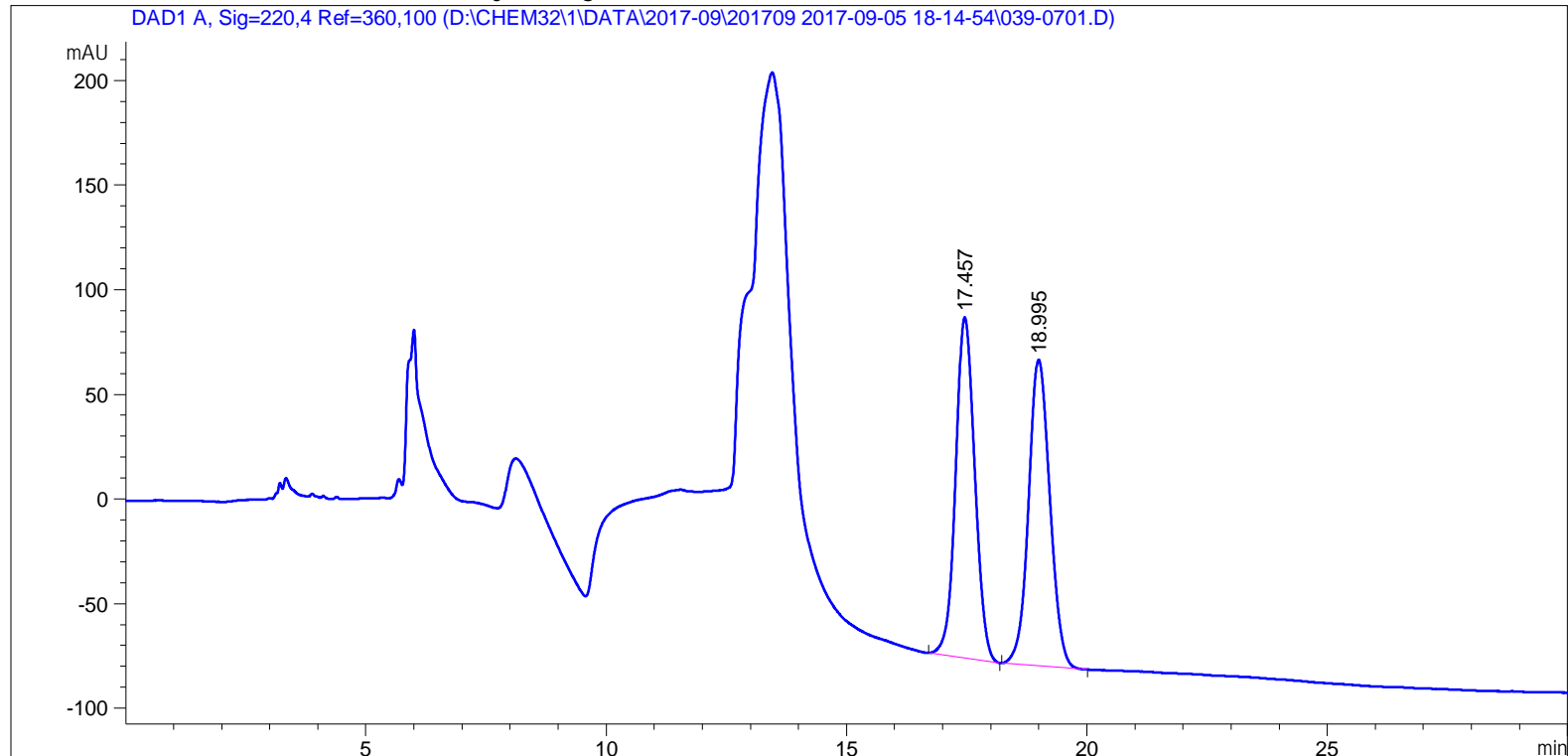
Different Inj Volume from Sequence ! Actual Inj Volume : 3.000 µl

Method : D:\CHEM32\1\DATA\2017-09\201709 2017-09-05 18-14-54\A(5)+C(95)-30MIN-2.M (Sequence Method)

Last changed : 9/5/2017 6:45:21 PM by SYSTEM

Method Info : wash column

Additional Info : Peak(s) manually integrated



=====  
Area Percent Report  
=====

Sorted By : Signal  
Multiplier : 1.0000  
Dilution : 1.0000  
Use Multiplier & Dilution Factor with ISTDs

Signal 1: DAD1 A, Sig=220,4 Ref=360,100

Peak #	RetTime [min]	Type	Width [min]	Area [mAU*s]	Height [mAU]	Area %
1	17.457	BB	0.4266	4502.32227	162.83786	50.0145
2	18.995	BB	0.4688	4499.70801	146.32587	49.9855

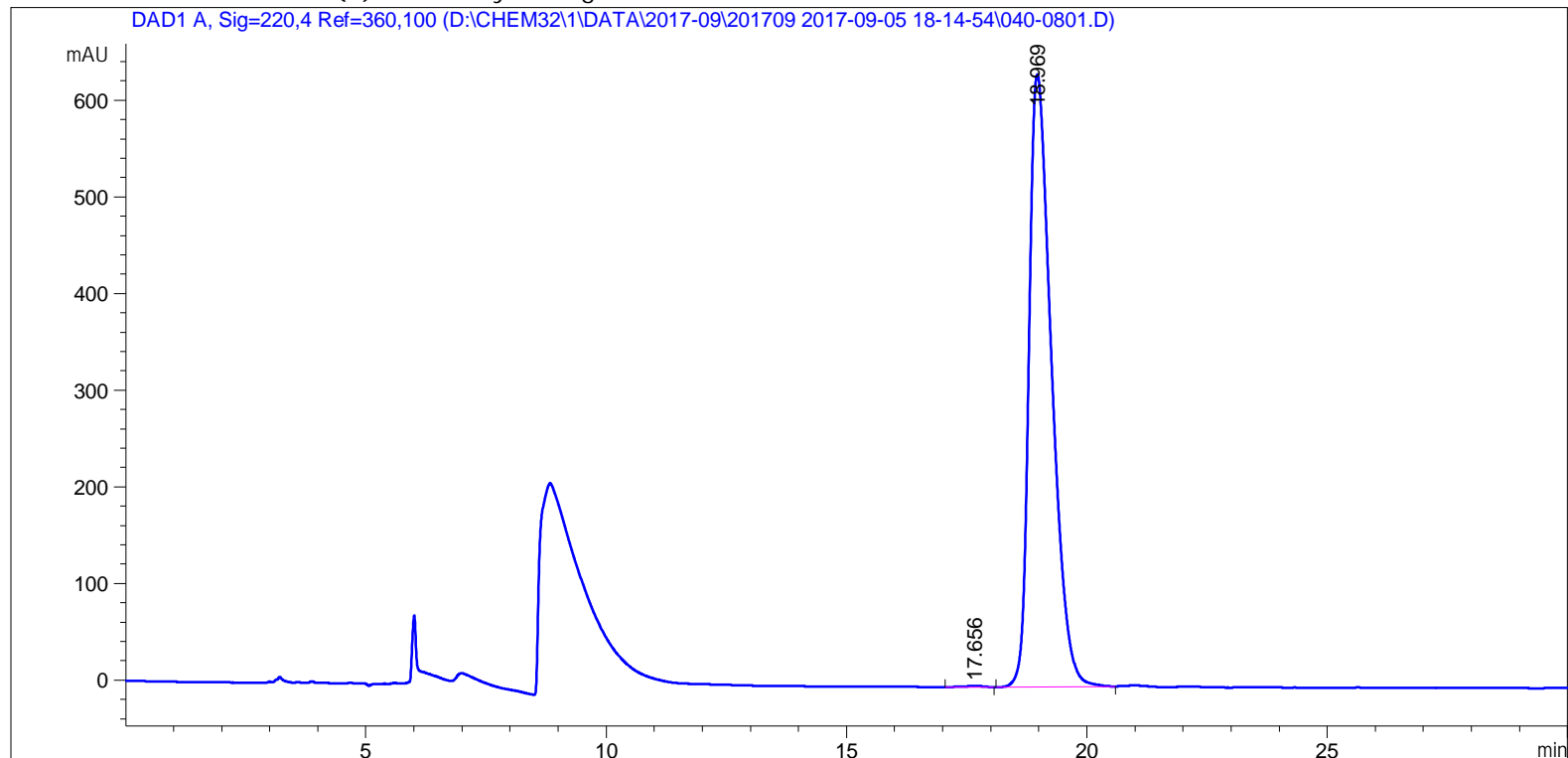
Totals : 9002.03027 309.16373

=====  
\*\*\* End of Report \*\*\*

=====

Acq. Operator	: SYSTEM	Seq. Line	: 8
Acq. Instrument	: LC1260	Location	: Vial 40
Injection Date	: 9/5/2017 9:57:06 PM	Inj	: 1
		Inj Volume	: 10.000 µl
Different Inj Volume from Sequence !		Actual Inj Volume	: 3.000 µl
Method	: D:\CHEM32\1\DATA\2017-09\201709 2017-09-05 18-14-54\A(5)+C(95)-30MIN-2.M (Sequence Method)		
Last changed	: 9/5/2017 6:45:21 PM by SYSTEM		
Method Info	: wash column		

Additional Info : Peak(s) manually integrated



=====  
Area Percent Report  
=====

Sorted By : Signal  
Multiplier : 1.0000  
Dilution : 1.0000  
Use Multiplier & Dilution Factor with ISTDs

Signal 1: DAD1 A, Sig=220,4 Ref=360,100

Peak #	RetTime [min]	Type	Width [min]	Area [mAU*s]	Height [mAU]	Area %
1	17.656	MM R	0.4422	36.72493	1.38425	0.1783
2	18.969	BB	0.4945	2.05569e4	633.70654	99.8217

Totals :                    2.05936e4    635.09079

=====  
\*\*\* End of Report \*\*\*